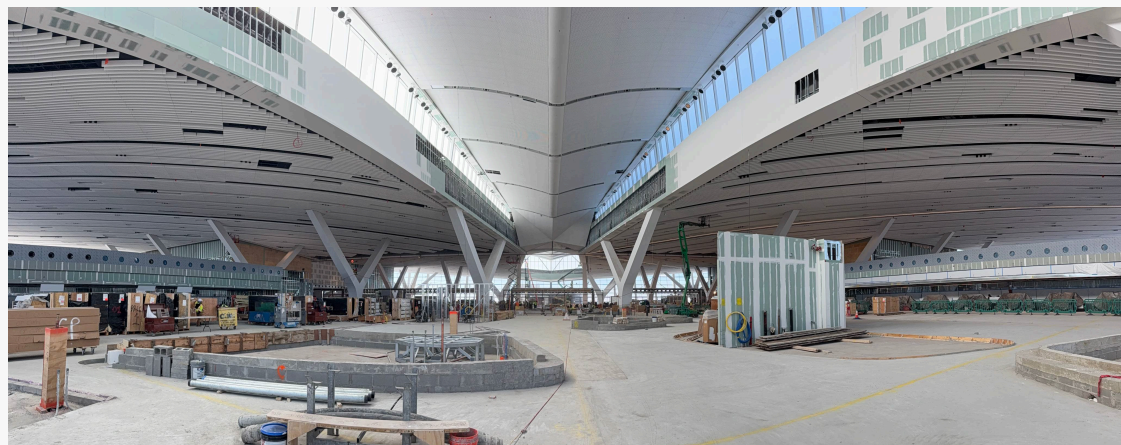


## Highlights

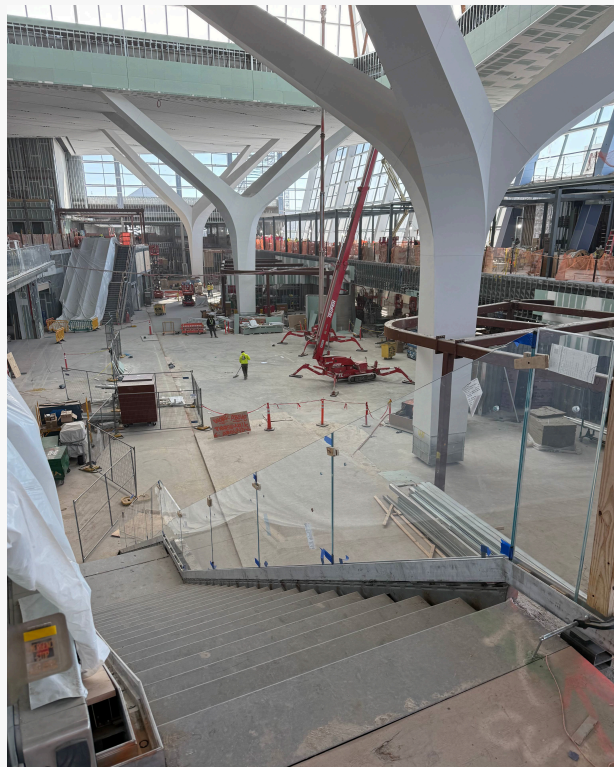
Terminal 6	3
RUGTC	5
Taxi Café	5
T8 Concessions	6
Lot 9 Solar	6
Eataly Opens in T8	7
Community Outreach	8

## New Terminal One

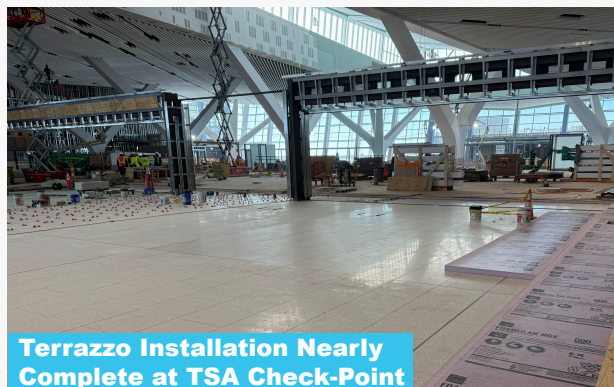


### Ongoing Work Includes

- Hydrant fueling flushing operations
- Single Track Outage implemented by AirTrain with plans to end later this month
- Terrazzo floor installation
- Tenant space fit-out
- Testing of passenger boarding bridges



Stairs from Recompose Area to Retail



Terrazzo Installation Nearly Complete at TSA Check-Point



Check-In Kiosks Begin Testing

## New Terminal One, cont.



**Public-Facing Baggage Handling System**



**Landscaping Work Continues on Arrivals Level**



**Mechanical for Radiant Floor System**



**Traffic Signal Testing on Departures Level**



**Radiant Floor Heating System Installed**

The New Terminal One recently completed the steel installation for its 295,000 square-foot departures curb canopy. Sheltering six lanes of traffic, the canopy (designed by Gensler) will shield travelers from the elements as they arrive at the terminal, while filtering natural light through translucent materials. Beneath the canopy, dynamic digital signage will provide real-time updates, guiding drivers to available lanes and curb space and maintaining smooth traffic flow for all. With a design that is flush to the road, the curb will offer greater accessibility for travelers. More than a striking architectural feature, the departures canopy sets the stage for a welcoming, efficient and accessible passenger journey at the New Terminal One.

### Recently Completed Work Includes

- Apron concrete and asphalt work

Self Serve Bag Drop Installation and Testing



Check-In Hall Built-In Seating Millwork



Future Food & Beverage Vendor



Ongoing Installation and Testing of Vertical Transportation



### Recent Milestones

- Terminal 5 egress roadway (R11B) activated
- Activated hot water and chilled water to Terminal

### Upcoming Work

- Terminal Life Safety Integration testing to begin
- Baggage handling system, integrated site acceptance test
- Airside paving in Q2
- Intergarage connector will be activated this month

Pedestrian Ramp to Fixed Gate



Intergarage Connector



The bridge will connect the yellow and orange garage. Upon completion, customers will enter the yellow garage and exit through the orange garage. Activating this bridge will allow for additional real estate used end-state of the Terminal 6 Arrivals Plaza. Activation of this bridge will allow for the build out of the end-state Terminal 6 Ground Transportation Center on the first floor of the Yellow Garage.



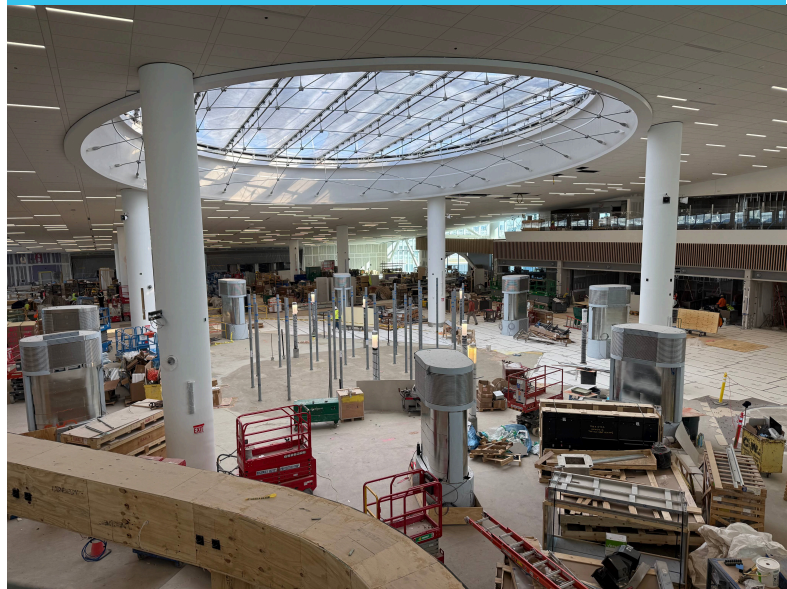
Connection from Existing Terminal 5 to Future Terminal 6 and Access to AirTrain



East Hall Post Security



Barrier Installation at Departures Level Bridges



Future Art Installation



Concessions Corridor



Future Concession in East Hall Food Court



Terminal 6

Existing T7

The permanent Blue Garage toll plazas are scheduled to activate in March. This will provide new ingress and egress routing to/from the Blue Garage which allows for the closure of the Blue Surface Lot and activation of the future permanent Terminal 4 Outer Arrivals Egress roadway.



Once the new Blue Garage Toll plazas have been activated, the Blue Surface Lot will be closed. Vehicles that remain parked in the Surface Lot will exit via the existing temporary exit plaza.



## JFK Taxi Café Reopens

In January, the Port Authority and JFK Redevelopment reopened the Taxi Café to yellow cab drivers visiting the taxi hold lot, a long awaited amenity that has been vacant for several years following the COVID-19 pandemic. This was a joint effort that included the help of the JFK General Manager's Office, the Resident Engineer's Office, the JFK Redevelopment team, and Landside Operations. The Taxi Café offers a diverse and affordable menu in a refurbished building that is decorated with historic taxi- and NYC-themed graphics. The café includes a team of workers that have been serving the taxi community for over 20 years and understand the needs of taxi drivers. Doors will be open 24/7.



## Terminal 8 Concessions

### Ongoing work includes

- Momofuku
- Black Tap Bar & Black Tap Singles and Doubles
- Tender Crush
- Pret a Manger
- Lego

### Upcoming work to be completed in March/April

- Pret a Manger
- Black Tap Bar
- Black Tap Singles and Doubles

## Long Term Parking Solar Canopy

The solar canopy installation in the long term parking lot is about 80% complete, with 11 of the 17 total canopies already in place.

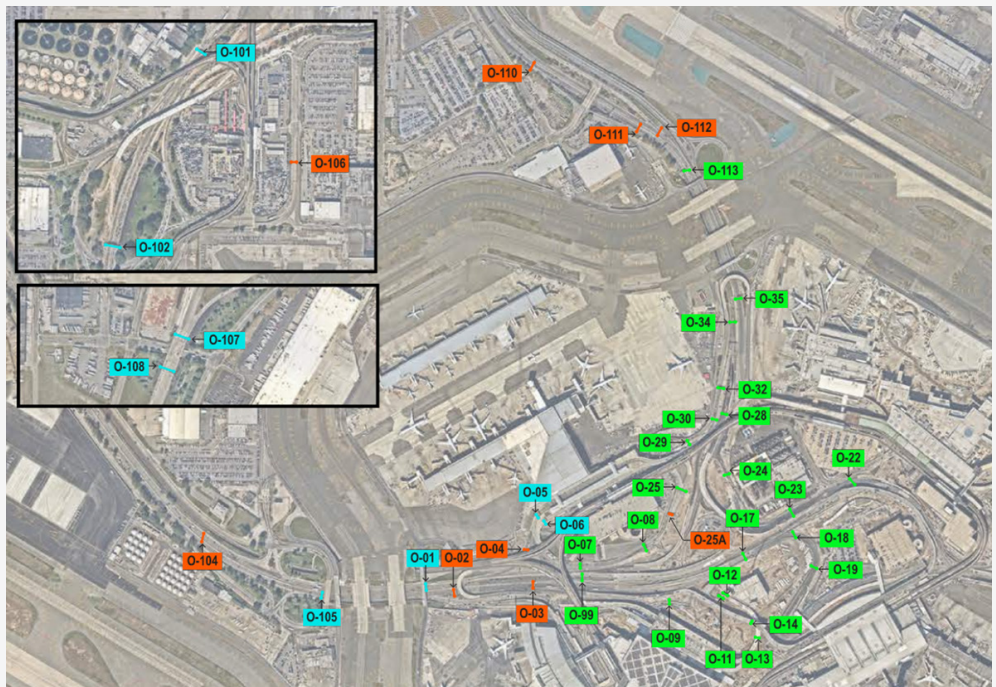
Upcoming equipment replacement is needed at the AirTrain substation to make it compatible with solar energy. Additionally, a Blockhouse will be built for ConEd to use when transferring power from the panels to the local community using its power grid. This project has an expected completion date of Q3 2026.



## Overhead Sign Installation

Permanent overhead sign structure installations continues with 23 of 31 new sign structures installed as of February 11.

Remaining overhead sign structure installations require full roadway closures and traffic detours overnight (~2AM-4AM). Coordination and outreach with impacted Terminal Operators ongoing as required.



LEGEND	
<span style="color: green;">■</span> INSTALLED	<span style="color: orange;">■</span> NOT YET INSTALLED
<span style="color: cyan;">■</span> PANEL SIGN REPLACEMENT	

## Terminal 8 Concessions; First Eataly in North American Airport Opens

In late January, the Port Authority of New York and New Jersey and global restaurateur HMSHost, part of Avolta AG and a world leader in creating dining for travel venues, celebrated the debut of Eataly at John F. Kennedy International Airport’s Terminal 8, marking the culmination of a strategic collaboration led by ASUR Airports and HMSHost to introduce the renowned Italian marketplace and retail concept to the North American airport environment. The new 5,526-square-foot full-service restaurant, 1,353-square-foot wine bar, and retail shop is the first Eataly in an airport in North America and will soon be followed by locations in Terminals 4 and 5 at JFK.

With more than 60 locations worldwide, including 20 across North America, Eataly brings a taste of the Italian lifestyle to JFK. The new Terminal 8 experience offers travellers a wide range of iconic Italian dishes — from traditional pizza and artisanal pasta to regional specialties. The restaurant seats over 130 guests and includes a dedicated wine bar with seating for 45 guests, serving a variety of Italian wines from the north to south of Italy and a café offering grab & go options, coffee, soft drinks, and curated retail items.

“Beloved by New Yorkers and world-renowned, the opening of Eataly at Terminal 8 advances the Port Authority’s goal of creating a world class passenger experience and a unique sense of place at a new JFK International Airport,” said Port Authority Executive Director Rick Cotton. “We are thrilled that Eataly has chosen JFK for its North American airport debut as we work with our private partners, including American Airlines, HMS Host and ASUR Airports, at Terminal 8 to make our terminals an enjoyable part of the passenger journey.”



## Community Outreach - 2026 Events

### Watch & Learn Series

Friday, March 20 at JFKR Community Information Center  
Film: Hidden Figures

Friday, June 26 at The Edward Davis Center in Saint Albans  
Film: Red Tails

Friday, October 2  
Friday, December 18

### Building Her Future II (Women's History Month)

Wednesday, March 18

### Spring Clean Up with Jamaica Bay Rockaway Parks Conservatory

Saturday, April 25

### Sustainability Day at JFKR

Saturday, May 2

### Aviation Trivia Tournament

Thursday, June 4

### Young Men Aviation Event

Wednesday, June 24  
JFK Building 14



## JFK Redevelopment Community Information Center

144-33 Jamaica Ave. Jamaica, NY

### Hours of Operation

Monday through Thursday 9 am - 5 pm

(718) 244-3834

JFKRedevelopment@panynj.gov

## Subscribe to E-mails

As construction moves along, we continue to urge our airport community and employees to subscribe to stay up-to-date with the latest information as changes on airport happen regularly.

[Click Here to  
Subscribe  
or Scan QR](#)

