

Westbound Connector Construction



Steel Erection of J34 Steel Bridge Work, Major Event for Westbound Connector Project

Highlights

[Around the Airport.....2](#)

[Construction Updates.....3](#)

[Community Outreach.....5](#)

JFK Pulse

As construction moves along, we continue to urge our airport community and employees to stay updated with the latest information as changes happen regularly.

[Click Here to Subscribe](#)



Scan here to subscribe to construction updates via The Pulse



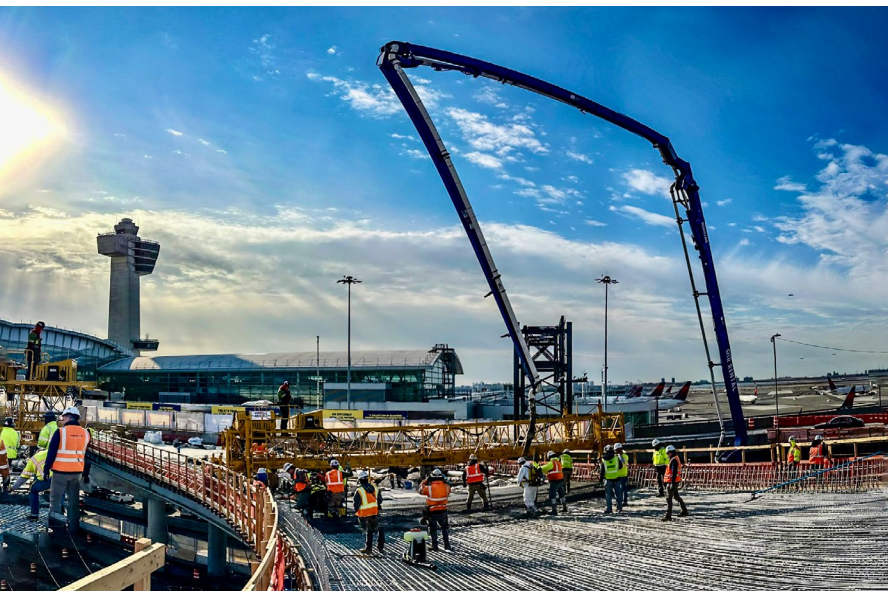
- Overnight bridge construction crossing the Van Wyck Expressway ongoing
- Impacts to the outbound Van Wyck Expressway were complete in early March
- Impacts to the inbound Van Wyck Expressway expected to begin late-March through the end of April



Around the Airport, continued

[Go to Page 1](#)

Roads, Utilities and Ground Transportation Center



Initial placement of concrete for the bridge deck servicing Terminal 4 departures. Completion of the bridge deck is anticipated in May 2025.



New final Terminal 4 Departures Ingress Bridge (R8) to be activated in early May 2025. This will allow for the demolition of the existing Terminal 4 Departures Ingress bridge to begin. Demolition of the existing T4 roadway will allow for completion of the New Terminal One elevated and at-grade roadways.

Construction Updates | Terminal 1 - South Terminal Development

T1 - Headhouse Curtain Wall



Taxi Operation Change:

- Successful Taxi queue pilot completed October 2024
- New T1 taxi operation expected to be activated in mid-April
- Minor shift to the taxi pick-up location
- Allows for consolidation of the TOGA VIP parking

Airside:

- Curtain wall completed at Gate 6 / power island
- Water quality devices being installed
- Concrete slabs being poured
- Paving started at Gate 1 area
- Staging passenger boarding bridges onsite until installation

Construction Updates, continued

[Go to Page 1](#)

Terminal 6 - North Terminal Development



Ongoing Terminal 6 curtain wall installation is parallel to frontage elevated roadways and underground utilities. The roadways will be completed by the scheduled opening of T6 in early 2026.

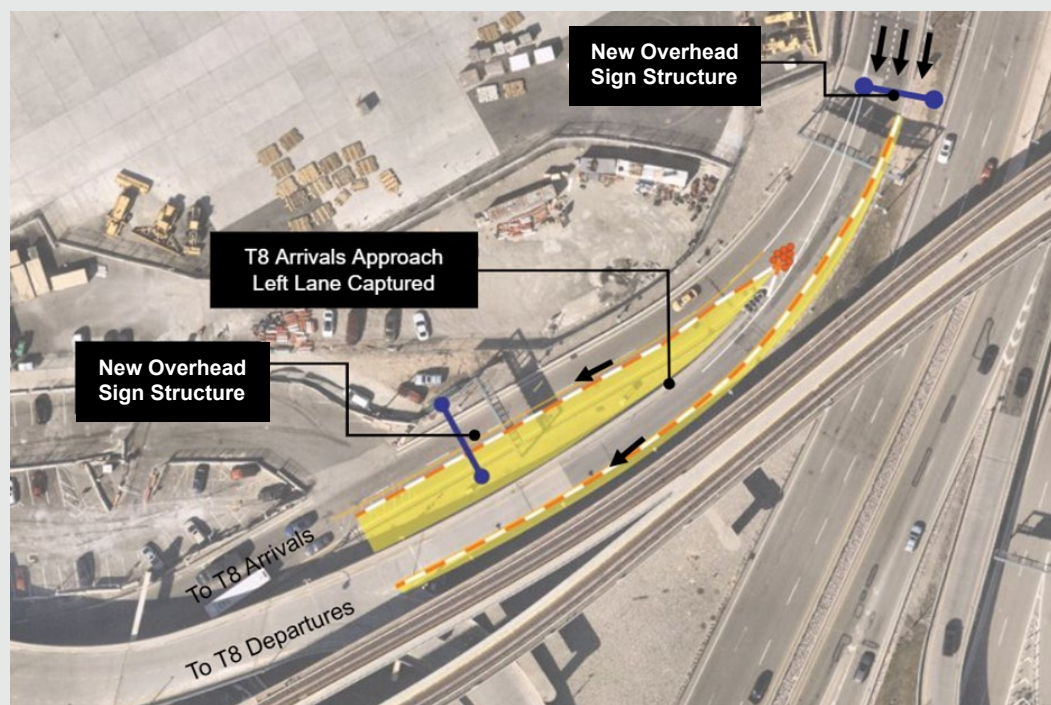
T7 Roadway modifications planned for Spring/Summer 2025 including:

- Demolition of bridge from T7 outer departures to the Orange Garage roof
- Demolition of direct access bridges to T7
- Orange Garage access via T7 Arrivals
- Final roadway configuration and routing under development

JFK Millennium Partners

Terminal 8 - Arrivals Approach Lane Capture

- Construction capture began in March 2025
- Reduces the Terminal 8 Arrivals approach to one lane
- Allows for utility relocations and new sign structure foundation installation
- Roadway to be restored to two lanes prior to summer peak season



Construction Updates, continued

[Go to Page 1](#)

Blue Garage Temporary Access Toll Plaza Activation



Temporary Blue Lot entrance toll plaza activated on March 10th

Existing Blue Lot toll plaza to be demolished to allow for the final entrance/exit toll plaza construction

Access to Blue Garage and Surface Lot via Terminal 4 Arrivals Roadway

Airside Projects:
South Multi-Use Facility

Concrete demolition, asphalt milling, electrical removals & relocations; Started installation of drainage features; Started site grading

Work to come: Excavation and installation of drainage structures and pipes; Installation of watermain; Continuation of pavement demolition and utility demolition work; Site grading ongoing; Removal of PIDS and high mast light poles

Contractor will be taking possession of the whole 48-acre site starting this month after deicing season ends; Sections of Taxiway Q will be closed to work on new throat construction; Taxiway N to Taxiway PA closure beginning April 15 through June 2.

Lot 9 - Solar Project



- Project scheduled to be completed by Spring 2026
- The long-term lot will continue to see varying impacts to parking until project completion
- Over 30% complete to date
- Impacts and disruptions expected on Lefferts Blvd and Pan Am Rd during summer 2025 due to cable pulling related to this work

Upon Completion the South Multiuse Facility will provide:

- 7 wide body aircraft deicing pads
- 11 wide body aircraft hardstands
- Glycol capture system
- Spent glycol storage tanks
- High mast lighting throughout the site
- Electrical equipment vault
- Deicing operations building
- New perimeter AOA fence & jet-blast fencing

Community Outreach

[Go to Page 1](#)

Community Advisory Council Meeting

The Community Advisory Council meeting was held at the Edward Davis Center located in Saint Albans, Queens in March. The meeting opened with remarks from Congressman Gregory Meeks and Queens Borough President Donovan Richards, co-chairs of the Advisory Council. More than 175 people attended to hear project and community updates from the Port Authority and each terminal developer or contractor. The focus of this meeting was work-

force success stories, including both the construction workforce and the Office of Second Chance Employment. Attendees were pleased to hear that approximately 20 percent of the construction workforce across the major terminal projects is local to Queens, resulting in more than \$150 million in wages and benefits paid to Queens residents to date. There was also a continued focus on the new concession's programs across the airport.

\$50 Million State Fund for Certified-ACDBE Concessionaires at JFK International Airport



From left to right: Blair Duncan, president & CEO of UMEZ, Justin Rodgers, president & CEO of GJDC, Manish Chadha of Singas Famous Pizza, Sarah McKeon, director of aviation of the Port Authority, Hope Knight, president & CEO of ESD, U.S. Rep. Gregory Meeks of New York, Queens Borough President Donovan Richards, Conroy Champagne of Golden Krust

The Port Authority & Empire State Development Corp. (ESD) announced the creation of an ACDBE Fund of \$50 million for certified-ACDBE concessionaires at JFK or LGA airports. Two initial loans have already been approved for local small businesses by the Greater Jamaica Development Corporation (GJDC) and the Upper

Manhattan Empowerment Zone, two of the participating lenders in the state program. They approved a \$1 million loan for Queens-based Corral Ventures LLC to open a Golden Krust Caribbean Restaurant and a \$1.05 million loan to Queens-based Pies for the Sky Corp. to open a Singas Famous Pizza, both at Terminal 8.

JFK Redevelopment Art & Poster Contest

The JFK Redevelopment Program is looking for student art to beautify public areas at the airport that are impacted by construction.

This year's theme is "Aviation, With A Queens Sense of Place." The top 6 winning posters will be publicly displayed in various locations across the airport, including along pedestrian walk-ways and in the JFK AirTrain. Who can participate? All students in grades 6-12 enrolled at a school located in Tier 1 zip codes* are eligible to participate. Each student must have an academic advisor submit the art on their behalf, pursuant to the Poster Submission Guidelines.

Deadline for Submissions is April 15th, 2025.

*Eligible "Tier 1" Zip Codes:

11405, 11411, 11412, 11413, 11414, 11416, 11417, 11418, 11419, 11420, 11421, 11422, 11423, 11428, 11429, 11430, 11432, 11433, 11434, 11435, 11436, 11451, 11691, 11692, 11693, 11694, 11695, 11697, 11559, 11598, 11096, 11516, 11557, 11003, 11580, 11581, 11582.

For more information, visit anewjfk.com/PosterContest



THE NEW TERMINAL ONE
JFK INTERNATIONAL AIRPORT

JFK Millennium Partners

Community Outreach, continued

[Go to Page 1](#)

JetBlue, Port Authority & Fraport Event – T5 Refresh



The Port Authority of New York and New Jersey, JetBlue and Fraport USA, manager of John F. Kennedy International Airport's Terminal 5, today announced a major refresh of the airline's flagship terminal. More than 40 new concessions that reflect the spirit and flavors of New York and new amenities, such as art installations and a redesigned center concourse inspired by New York's iconic parks, will create a unique New York sense of place and an elevated customer experience.

The first new concessions are expected to open throughout 2025, with the terminal improvements completed by the end of 2026. JetBlue's Terminal 5 improvements, which align with the Port Authority's \$19 billion overhaul of JFK Airport, will spotlight many locally owned businesses, featuring beloved brands recognized by both New Yorkers and visitors worldwide. Through more than 40 new concessions and customer

experiences, including more than 18 new local food and beverage options, customers will have more options to enhance their experience at JFK. At the heart of Terminal 5, the center concourse will transform into a space inspired by the city's famous parks. Lush greenery, park benches, concrete chess tables, and warm lighting provide city park charm for customers to relax before their next flight. The redesigned center concourse will also feature a dedicated space for pop-up experiences, interactive events, and live performances to highlight New York's world-renowned culture.

Additionally, an art collection featuring more than 30 works by New York-based artists displayed throughout the terminal will transform Terminal 5 into a vibrant cultural destination. As a dynamic showcase of the city's creativity, Terminal 5 will become a must-visit artistic experience of its own.

Women's History Month Celebration Event



The JFK Redevelopment Program held a Women's History Month event at the end of March in partnership with High School for Construction, Trades, Engineering & Architecture (HSCTEA). Panelists included, (left to right) Mariel Simmonds-Little, Sarah Azeez (moderator), Samantha Quinones, Anisa Dhimarko, Sharnette Tucker, and Julie Murphy, Fatima Salada, all who work on the JFK Redevelopment Program in varying capacities. Female students from HSCTEA were given an opportunity to ask the panel questions, and were later given an airport tour to see what progress and work is being done at JFK.

JFK Redevelopment Community Information Center

144-33 Jamaica Ave. Jamaica, NY
Phone: 718-244-3834

Hours of Operation
Tuesday - Thursday 9 am – 5 pm

*Mondays and Fridays are virtual work days for the Community Information Center staff

www.anewjfk.com
jfkreddevelopment@panynj.gov

Redevelopment Broadcast

JFK PULSE

Subscribe to get employee-centric alerts and notifications about airport activity.

[Click Here to Subscribe](#)