



JFK Redevelopment Art & Poster Contest Winners

Earlier this year, the Port Authority of New York and New Jersey, along with New Terminal One and JFK Millennium Partners kicked off a student art contest open to students grades 6 - 12 who live in zip codes closest to JFK Airport.

In an effort to beautify public areas impacted by construction activities, local student artists were invited to create posters representing "Aviation with a Queens Sense of Place." Posters were evaluated based on creativity, originality, technique, use of color and presentation. (continued on page 6)

AirTrain Fare Reduction: Now Through Labor Day **Single-Trip fare is discounted*



Through Labor Day, the single-trip AirTrain JFK fare will be reduced by 50 percent, the latest piece of multi-prong strategy to reduce potential traffic congestion (10-trip and monthly are excluded). For the second consecutive year, summer passenger volume is forecasted to set a new record at JFK with 18.3 million travelers expected. In order to mitigate construction impacts, Port Authority continues to expand efforts to divert vehicles from terminal frontages and emphasizes the importance of using public transit whenever possible.

Highlights

[Construction Updates.....2](#)

[Community Outreach.....6](#)

[Airport Tips.....6](#)

JFK Pulse

As construction moves along, we continue to urge our airport community and employees to stay updated with the latest information as changes happen regularly.

[Click Here to Subscribe](#)



Scan the QR code to subscribe to the JFK Pulse updates!

Construction Updates

[Go to Page 1](#)

Roads, Utilities and Ground Transportation Center



RUGTC - R8 Bridge Activation



Westbound Connector Bridge J33 - Steel Erection



Westbound Connector Bridge J34 - Steel Erection

Work recently completed:

- New Terminal 4 Departures Bridge
- Demolition of old Terminal 4 Departures Bridge
- Westbound Connector steel erection over the Van Wyck Expressway

Ongoing Work:

- Westbound Connector work continues including the two bridges (One bridge takes traffic from the JFK Expressway to Cargo Service Rd. The other take the traffic from Cargo Service Rd to the Van Wyck Expressway) and at-grade roadways
- New permanent T5/T6 flyover bridge
- New garage and ground transportation center for Terminals 1 and 4
- Utility installations and relocations
- At-grade and overhead sign structure installations

To be completed later this year:

- New T5/T6 Flyover Bridge

Construction Updates, continued

[Go to Page 1](#)

Terminal 1 - South Terminal Development

Canopy Steel at HOV



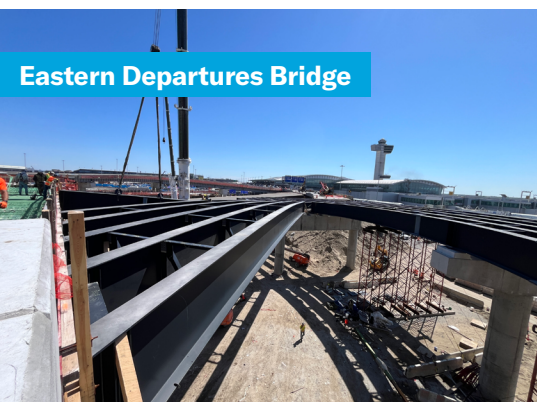
Recently Completed Work:

- Final departures concrete deck placement

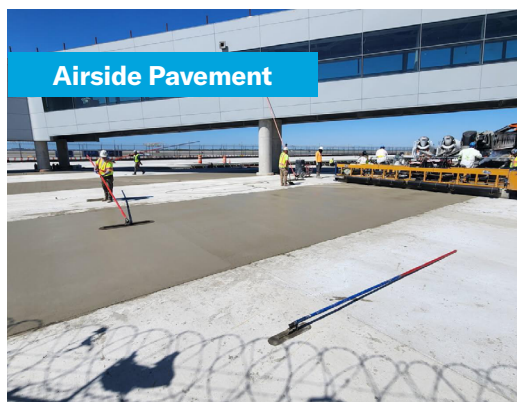
Ongoing work:

- Interior fit-out of headhouse and east pier
- Canopy steel erection on arrivals level
- Running and testing of the new chilled water and medium temperature hot water systems to make sure they can cool & heat as designed
- Continue passenger boarding bridge installations at airside gates

Eastern Departures Bridge



Airside Pavement



Departures Level/Meeter Greet



Federal Inspection Station



Airside Pavement



Check-In Island



Construction Updates, continued

[Go to Page 1](#)

Terminal 4 - Capital One Opening its Flagship Lounge

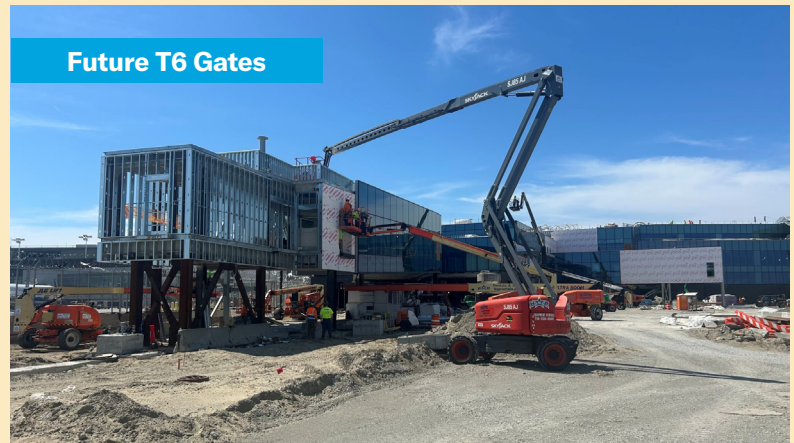


The new Capital One Lounge, located in JFK Terminal 4, is the first credit card-branded lounge to be open 24/7. The lounge spans over 13,000 square feet in the central corridor connecting the A and B gates in Terminal 4 with a variety of seating areas, a library nook, a new cheesemonger (partnered with the

famous Murray's Cheese) with bar-style seating, and its flagship bar with artistic lighting features and mirrored ceiling. The lounge has an all-day cold buffet – think salads, light bites and desserts – as well as made-to-order hot buffet, as well as made-to-order grab & go options with a bagel counter featuring the famous

Ess-a-Bagel. There's also a signature bar featuring more than 15 cocktails named after famous locations in New York City. The lounge has two private rooms across from the bar, bookable on a first-come, first-serve basis for 45 minutes at a time.

Terminal 6 - North Terminal Development



Construction Updates, continued

[Go to Page 1](#)

Terminal 6 - North Terminal Development, cont.



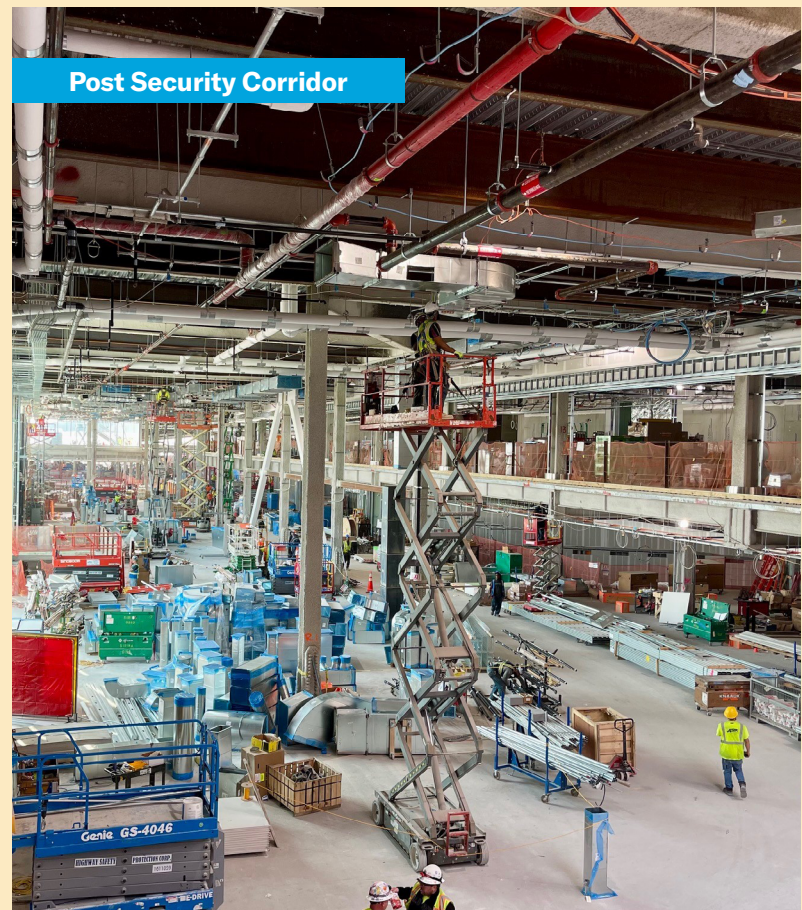
Apron Concrete Pour



Check-In Hall

Ongoing work:

- New T7 traffic detour went into effect mid-June allowing for demolition of T7 departures ingress ramp and can continue steel and arrivals plaza construction work
- Roadway steel topping out in mid July
- Orange garage access bridge will be removed in July
- Substation energization target is mid July but august is more likely
- Hot water and chilled water to be activated in late July
- Set first passenger boarding bridge airside in July
- Begin testing of MEP utilities
- Concession fit-out to begin in July
- Ramp up architectural components inside terminal such as terrazzo, floor tile, wall finishes



Post Security Corridor

Community Outreach

[Go to Page 1](#)

JFKR Art & Poster Contest Winners Announced



Continued from page 1...On June 18 at York College friends and family gathered as the six winning posters were unveiled. Each of the six winners received a congressional certificate of merit from U.S. Rep. Gregory Meeks, a citation of honor from Queens Borough President Donovan Richards, and a certificate of merit from the New York State Assembly. All contest participants received a certificate of recognition for participating in the contest. In addition to their artwork shining brightly across the AirTrain

JFK system, skybridges at terminals 1 and 5, and construction walls outside the new Terminal One, the six finalists will take part in a guided bus tour of the airport and its ongoing transformation.

The winners also received a prize package valued at approximately \$500 to further their artistic pursuits, with options including a course at the Jamaica Center for Arts and Learning, a gift card to an art supply store, or a one-year Adobe Creative Cloud subscription.

AirTrain Fare Reduction, cont.

The half-price AirTrain JFK fare of \$4.25 applies at both the Jamaica and Howard Beach stations, the two off-airport stations that require payment via OMNY or MetroCard. For travelers who must take a car to the airport, the Port Authority operates a drop-off/pickup lot at AirTrain JFK's on-airport Lefferts Blvd station, which is a free direct 8-minute AirTrain ride to the airport terminals to help passengers avoid heavy congestion on terminal

frontages. Parking at the airport will be extremely limited, and passengers planning to park should pre-book at JFKAirport.com in order to guarantee a spot. Anyone who must drive to JFK should plan to arrive three hours before their flight. Access by car to Terminal 7 will be especially challenging this summer while the existing roadway to the terminal is demolished so that steel for a new permanent roadway to Terminal 6 can be erected.



JFK
REDEVELOPMENT

EDUCATION

PORT AUTHORITY
NY NJ
AIR LAND RAIL SEA

THE NEW TERMINAL ONE
JFK INTERNATIONAL AIRPORT

JFK Millennium
Partners

JFK Redevelopment Community Information Center

144-33 Jamaica Ave. Jamaica, NY
Phone: 718-244-3834

Hours of Operation
Tuesday - Thursday 9 am – 5 pm

*Mondays and Fridays are virtual
work days for the Community
Information Center staff

www.anewjfk.com
jfkredvelopment@panynj.gov

Redevelopment Broadcast
JFK PULSE

Subscribe to get employee-
centric alerts and notifications
about airport activity.

[Click Here to Subscribe](#)