

## Highlights

New Terminal One.....	2
JMP/Terminal 6.....	3
RUGTC.....	5
Community Outreach.....	8
Staff Engagement.....	9

## Subscribe to E-mails

As construction moves along, we continue to urge our airport community and employees to subscribe to stay up-to-date with the latest information as changes on airport happen regularly.

[Click Here to Subscribe](#)



Scan the QR code to subscribe to JFKR emails and updates!



## A Message from Leadership

As we approach Thanksgiving, we would like to extend our heartfelt appreciation to the dedicated employees and partners across the airport community that are working on transforming John F. Kennedy International Airport into a world-class destination New Yorkers can be proud of. Whether we are visiting loved ones away or welcoming visitors to our home city, this time of year always serves as a good reminder of the importance of connection. We are especially grateful for your continued patience and cooperation as we advance this historic transformation through the upcoming holiday season. This year we celebrated several major accomplishments in our program including the activation of the new permanent J37 roadway and significant progress on the Central Terminal Area roadways – both key

steps in improving how our customers travel through the airport. As part of the next phase of roadway network changes, we are excited to open the Westbound Connector in early 2026. This roadway will provide streamlined access from Long Island to Terminals 1 and 4, marking another significant step towards our vision of a simplified roadway network. None of this would be possible without your continued support which has enabled us to operate smoothly, even on our busiest travel days. On behalf of the entire JFK family, we wish you a safe, joyful, and memorable Thanksgiving holiday.

— Teresa Rizzuto, General Manager, JFK Airport, Jessica Forse, JFK Airport Redevelopment Program, Program Executive, & Gina Bigler Director of Construction, JFK Redevelopment Program

## Terminal 1 – South Terminal Development



Arrivals Hall



Ongoing Work Inside Main Arrivals/Departure Hall



## Construction Updates | T1, continued

[Go to Page 1](#)**Ongoing Canopy Installation on Arrivals and Departures****Ongoing Work**

- Canopy installation on both arrivals and departures levels
- Traffic signal installations at both arrivals and departures
- Baggage handling system testing
- Passenger boarding bridge installations (gates 1-8 complete, starting gates 9 & 10)
- Arrivals roadway asphalt and curb installation
- Terminal interior fit-out
- First phase of taxi lane KG improvements commenced
- Alphastruxure, an energy service provider and microgrid integrator, continues with their solar panel installation

**Clerestory aka "The Bowtie" in the Main Departures Hall****Existing Terminal 1 (left) Next to Future Terminal 1**

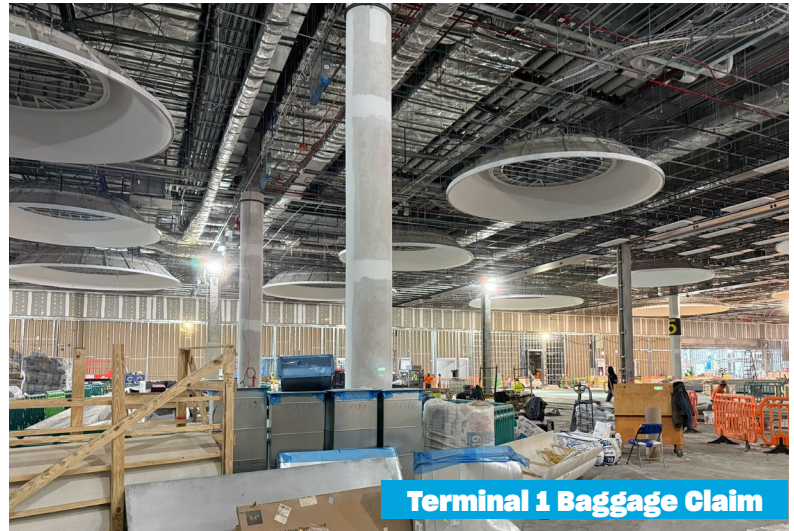


## Construction Updates | T1, continued

[Go to Page 1](#)



Check-In Kiosks



Terminal 1 Baggage Claim

## Terminal 6 – North Terminal Development Updates



Ongoing Work in Check-In Hall

### Recently Completed Work

- Departures roadways steel topping out
- Inter-garage connector (Bridge R11C) steel topping out
- Terminal substantially enclosed
- Substation 1 and 2 have been energized



## Construction Updates, continued

[Go to Page 1](#)**Installation of Baggage Carousels****Digital Screen Surrounding Future New Gate****Future Permanent Art Installation****Ongoing Work**

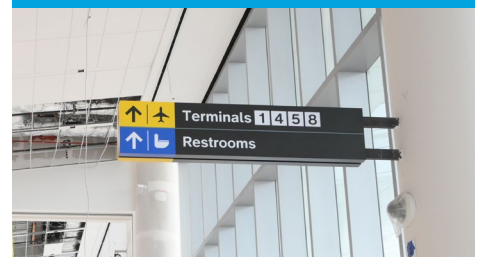
- Airside concrete removal, grading, and Econcrete installation
- Airside hydrant fuel system excavation and installation
- Other airside utilities such as storm and water installation
- Roadway decks and barriers for the inter-garage connector bridge continues concrete pours
- Roadways Mechanically Stabilized Earth wall construction
- Terminal low voltage, fire protection, fire alarm, and baggage system install and testing
- Vertical transportation install and testing

**Ongoing Concessions Work**

- Layout and framing for Food & Beverage space
- Layout, framing, Mechanical Electrical and Plumbing, for duty free space(s)

**Upcoming Work**

- Medium-Temperature Hot Water systems and Chilled Water systems commissioning
- Baggage Handling System Integrated Systems Acceptance testing
- Permanent T5 egress roadway configuration

**Permanent Wayfinding Signage Installed****Looking Up from Outside Arrivals Level**



## Construction Updates, continued

[Go to Page 1](#)

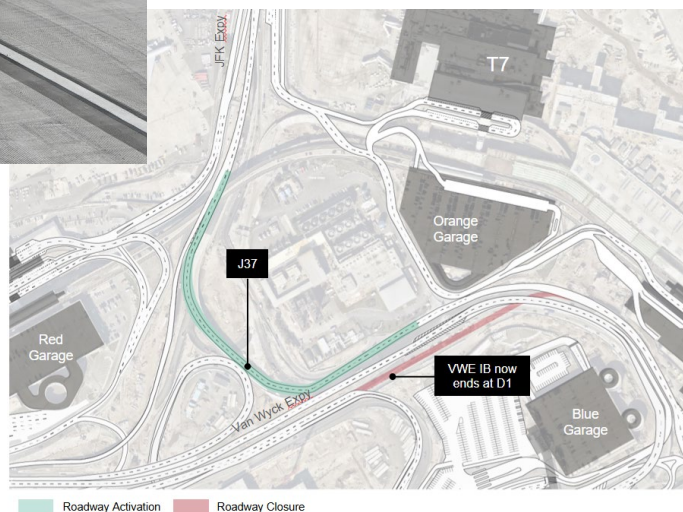
## Roads, Utilities, and Ground Transportation Center

## J37 Access Bridge Activation



As of Wednesday, October 15, a new permanent roadway configuration opened for drivers heading to Terminal 5 and Terminal 7

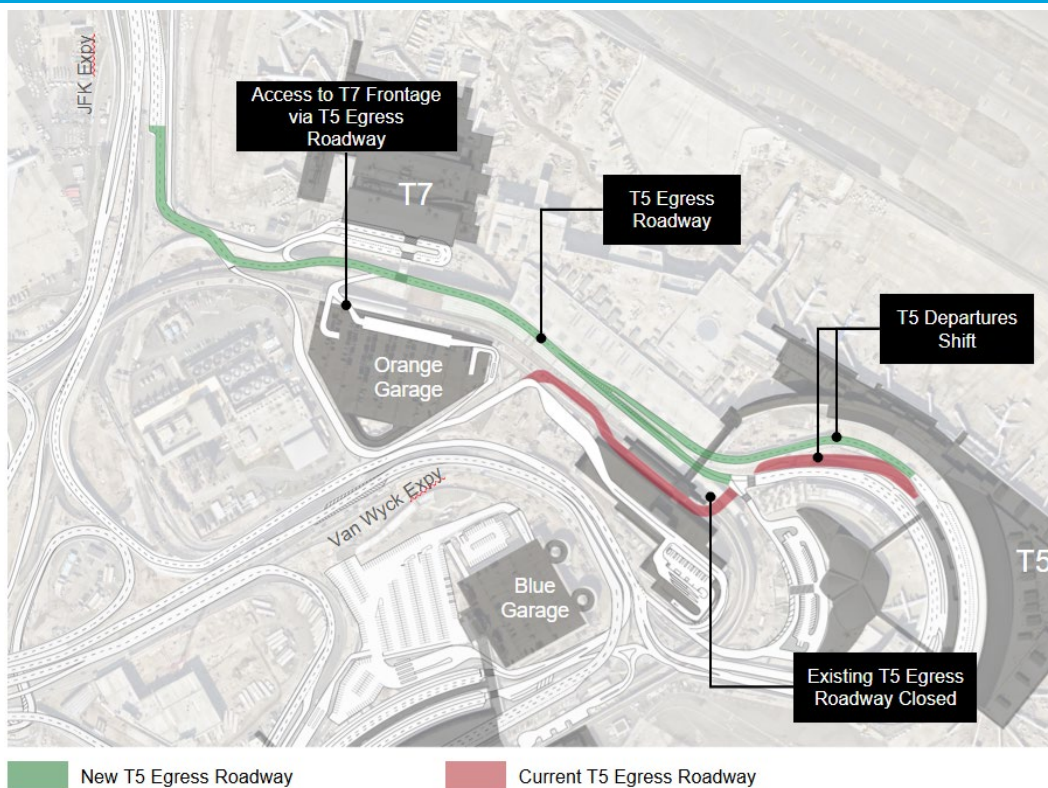
- Vehicles destined for Terminal 5 and Terminal 7 are now directed to the inbound JFK Expressway
- This is the penultimate step before the airport's simplified roadway network is completed in early 2026



## Terminal 5 Egress Roadway Activation

Terminal 5 egress traffic planned to be shifted onto the permanent roadways by early 2026

- Terminal 7 access also shifts onto the new roadways
- Existing roadway between the Yellow Garage and Terminal 7 AirTrain station closes
- Vehicles on KIAC Rd reduced to Yellow Garage exiting traffic and Terminal 7 egress traffic only



New T5 Egress Roadway

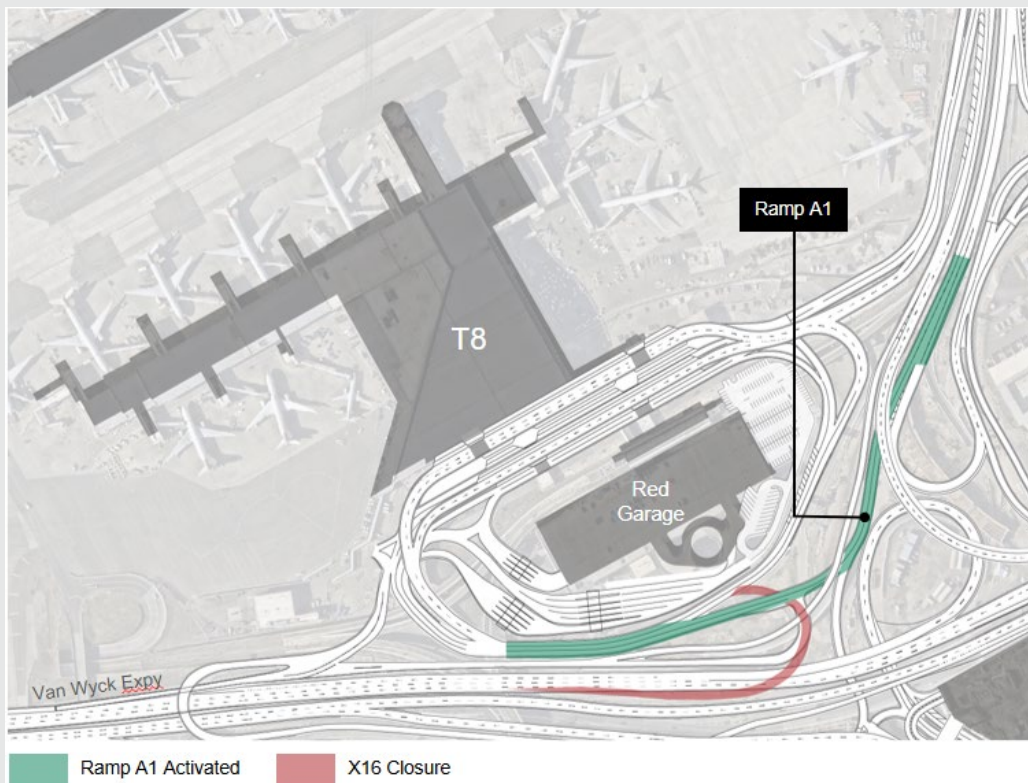
Current T5 Egress Roadway



## Construction Updates, continued

[Go to Page 1](#)

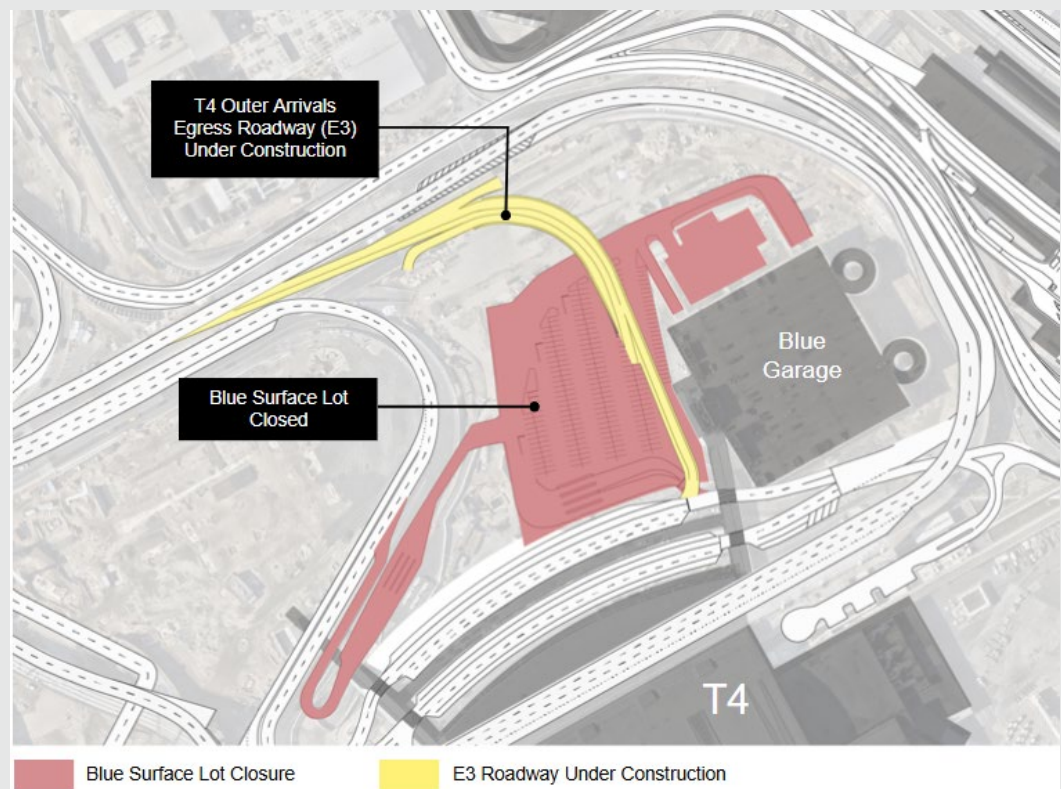
## RUGTC, Cont.

**Permanent Terminal 8 Egress Roadway Activation**

- Permanent egress roadway from Terminal 8 to the JFK Expressway to be activated in early- December
- Existing Terminal 8 egress route to the Van Wyck to be closed for final roadway configuration construction

**Blue Surface Lot Closure**

- Blue surface lot to be closed in January for construction of permanent Terminal 4 outer arrivals egress roadway and future development
- Blue Parking Garage access and egress will continue to be maintained

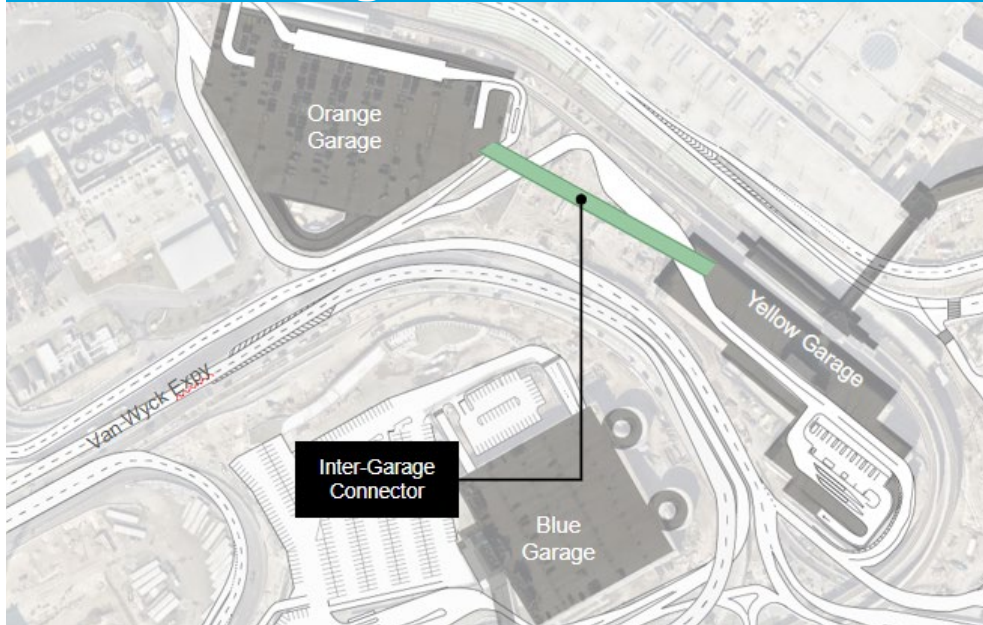




## Construction Updates, continued

[Go to Page 1](#)

### Inter-Garage Connector Between the Orange and Yellow Garages



- Scheduled to be activated in early 2026
- Allows for the closure and demolition of the existing Yellow Garage exit toll plaza
- Allows JMP to build out the future Terminal 5/6 Ground Transportation Center on Lvl. 1 of the Yellow Garage
- Parking access via the Yellow Garage only
- Parking Egress via the Orange Garage only

### Future Terminal 1 Garage



### Westbound Connector Work Continues



**Long-Term Parking Lot  
Solar Project:**  
Roughly 65% complete  
and is projected to be  
completed in 2026

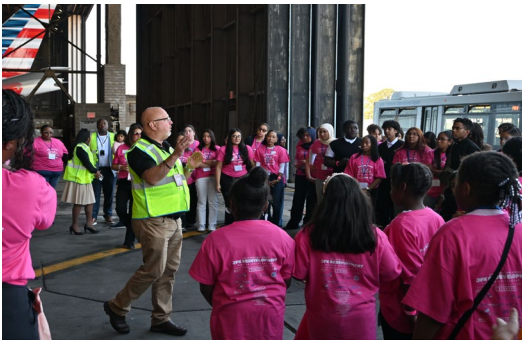




**Community Outreach**[\*\*Go to Page 1\*\*](#)**Girls In Aviation**

In early October, JFK Redevelopment, in partnership with Women in Aviation International, JFK Millennium Partners, JFK IAT, New Terminal One, Delta Air Lines, and American Airlines, welcomed over 110 girls from schools and community programs local to John F. Kennedy International Airport for a fun and educational day. The event provided an engaging, hands-on introduction to careers and opportunities within the aviation industry, aligning with Women in Aviation International's goal to inspire and empower the next generation of women in aerospace. Participants explored a variety

of interactive stations and exhibits highlighting key aspects of aviation, from airport operations and drone technology to engineering, and sustainability. The activity stations were led by aviation professionals and organizations including URW, building a model airport city and paper airplane contest, Women in Aviation International, activity booklets, and the Cradle of Aviation Museum provided drones. Throughout the day, students engaged in STEM-based activities, participated in building a model airport, and networked with women leaders across the aviation industry. The event fostered excitement, confidence, and curiosity among the participants; reinforcing the importance of female representation and mentorship in aviation. Thank you to our support partners, LMN Printing, One in a Million Printing, Kis Kreations, Sensative Treasures by Lynn, IJ Printing, She's So Epic, TSpeaksNYC, and Amazon, as well as the Port Authority's JFK Maintenance and Administration teams for making this event possible. Special thanks to American Airlines for welcoming this year participants to the hangar for an inside look at its 777-300ER aircraft.

**Community Advisory Council Meeting**

In late October, JFK Redevelopment held a Community Advisory Council meeting, facilitated by Dr. Stacie N.C. Grant. There were over 230 attendees including community members, stakeholders, and project partners. The Port Authority of New York and New Jersey shared important updates on redevelopment progress and sustainability initiatives. Key agenda items included diversity in contracting, featuring updates on JFK Redevelopment's MWBE and LBE monthly public reporting and community development initiatives. Terminal developers, including Terminal 6's JFK Millennium Partners, Terminal 1's New Terminal One, RUGTC's Skanska Halmar JFK Joint Venture, Terminal 8's American Airlines & URW, and Terminal 4's JFKIAT, presented project updates and shared insights into their upcoming art and concessions programs. The presentations showcased renderings, tables, and creative concepts that will enhance the passenger experience across terminals. Additionally, students from York College's JFK Redevelopment Aviation Academy highlighted their ongoing projects and achievements, demonstrating the program's success in preparing local talent for careers in aviation and related industries. The Port Authority Police Department was also present to share safety information and engage with community members.



## Staff Engagement

[Go to Page 1](#)

## WE ASKED JFKR STAFF:

## What is your favorite Thanksgiving dish?

**Cocktails!**

Linda McKenna, Program Manager for NTO

**Stuffing**

Valerie Ruiz, Safety Manager

**Sweet potato casserole (golden brown toasted marshmallows on top!)**

Tes DeJaegar, Project Manager

**Loaded Baked Potato**

Cindy Guzman, Graphic Designer

**Sweet Potato and Macaroni & Cheese**

Natasha Turner, Project Manager with Community Outreach

**Homemade Yorkshire Pudding**

Oscar Rich, Senior Program Manager

**Baked Fish in Pineapple Sauce**

Glenna Hamilton-Jones, Program Coordinator

**Vegetable Fried Rice**

Carla Hamilton, Program Coordinator

**Pumpkin Pie**

Tiffany Benavides, BIM Specialist

Carmelo Castillo, Project Manager T6

**Wild Mushroom Stuffing**

Mina Mahdavi, BIM &amp; Reporting Manager



## JFK Redevelopment Community Information Center

144-33 Jamaica Ave. Jamaica, NY

Hours of OperationMonday through Friday 9 am - 5 pm  
(718) 244-3834[JFKRedevelopment@panynj.gov](mailto:JFKRedevelopment@panynj.gov)

Redevelopment Broadcast

**JFK PULSE**

Subscribe to get employee-centric alerts and notifications about airport activity.

[Click Here for Pulse & Newsletter](#)